

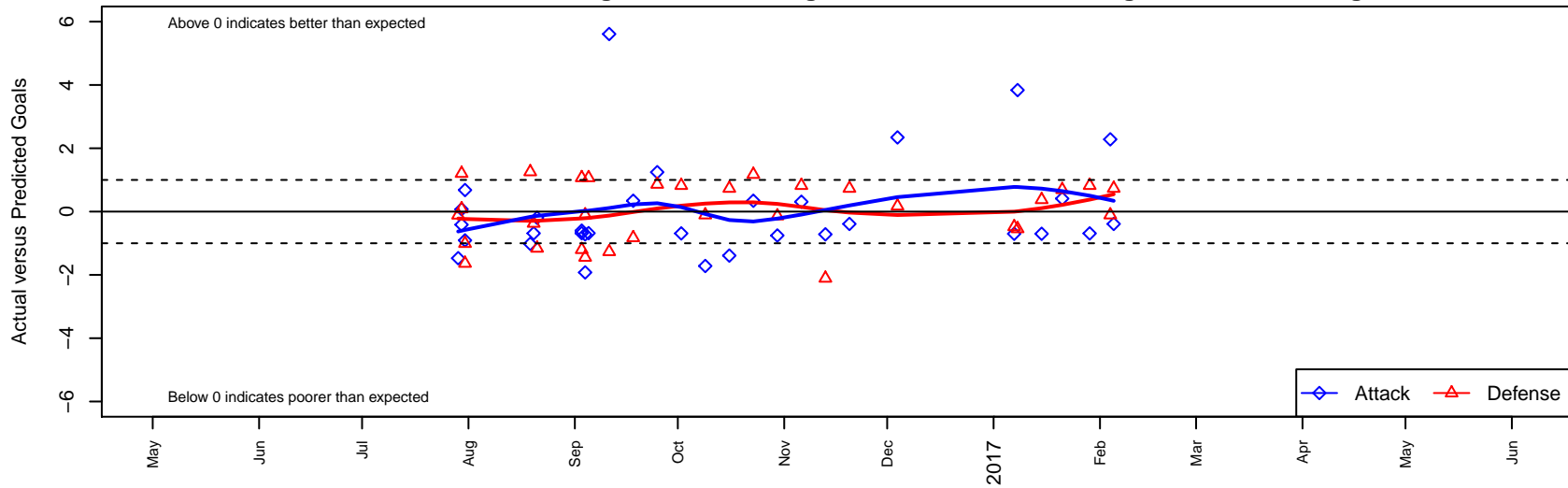
NSC Vortex Green B02

Northshore SC
 Woodinville, WA
 B02 total strength=1526
 attack=15.36 defense=9.98
 fall league = NPSL Div 1 (02) U15

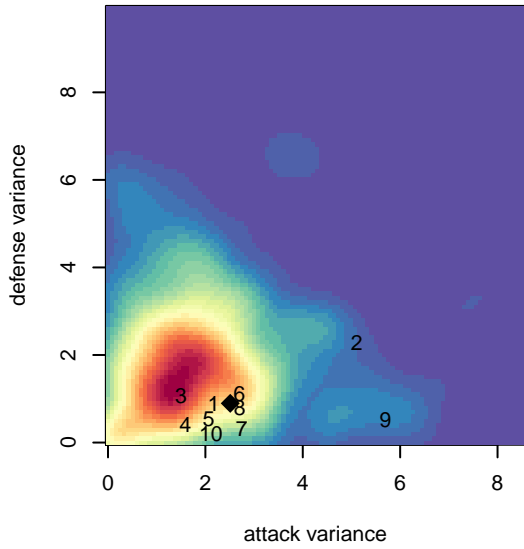
alt names used:
 NORTHSHORE SELECT NSC VORTEX B02 (1
 NSC B02 Green Vortex
 NORTHSHORE SELECTNSC VORTEX GREE
 NSC B02 Vortex Green
 NSC Vortex B02 Green

Venues played:
 2016 Mt Hood Challenge U15 Gold
 2016 Bigfoot Gold U15
 2016 Labor Day Cup BU15 Silver
 2016 NPSL Division 1 (02) U15
 2016 Founders Cup B02 Div A

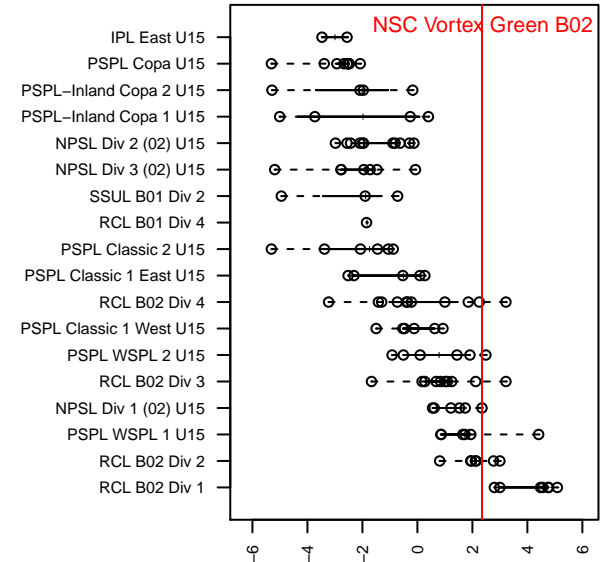
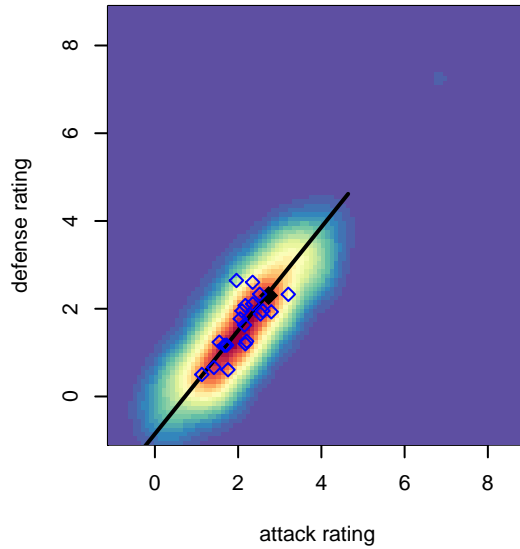
NSC Vortex Green B02
 Dots are actual minus expected GF (blue circles) and GA (red triangles).
 Blue line is smoothed change in attack strength. Red is smoothed change in defense strength.



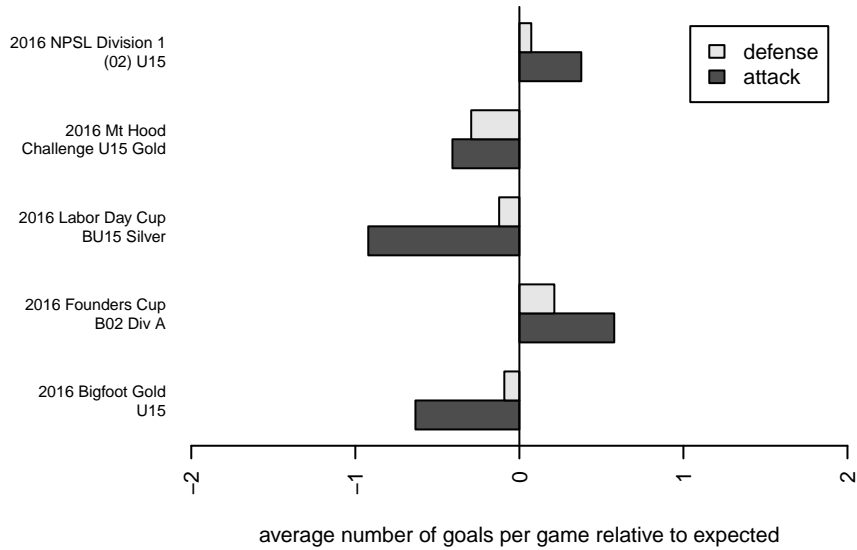
**attack and defense variance (black dot)
relative to other teams
and top 10 in region**



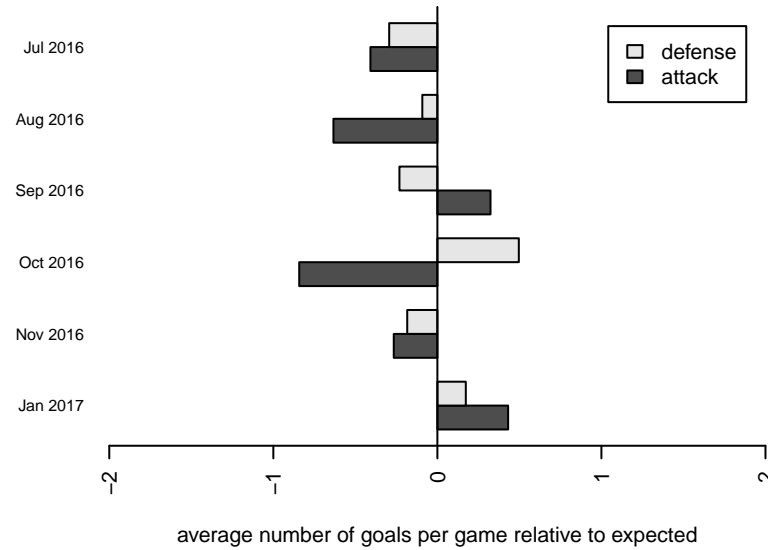
**attack and defense rating
relative to others at age
and all opponents in last 13 months**



Performance relative to 13 month average



Performance relative to 13 month average



date	home		away		venue	pred.home	pred.awa
17-02-05	NSC Vortex Green B02	1	Seattle United Shoreline Blue B02	0	2016 Founders Cup B02 Div A	1.39	0.73
17-02-04	NSC Vortex Green B02	4	Crossfire Select Luna B02	1	2016 Founders Cup B02 Div A	1.72	0.89
17-01-29	NSC Vortex Green B02	2	Seattle United W Blue B02	0	2016 Founders Cup B02 Div A	2.69	0.82
17-01-21	NSC Vortex Green B02	5	Washington Timbers Red 2 B02	0	2016 Founders Cup B02 Div A	4.59	0.69
17-01-15	Seattle United S White B02	0	NSC Vortex Green B02	8	2016 Founders Cup B02 Div A	0.38	8.70
17-01-08	LSDSC Rockets B02	1	NSC Vortex Green B02	11	2016 Founders Cup B02 Div A	0.46	7.16
17-01-07	NSC Vortex Green B02	4	Mukilteo Rush B02	1	2016 Founders Cup B02 Div A	4.70	0.52
16-12-04	NSC Vortex Green B02	4	Southlake Select TUSK United B02	1	2016 NPSL Division 1 (02) U15	1.66	1.17
16-11-20	Seattle United Shoreline Blue B02	0	NSC Vortex Green B02	1	2016 NPSL Division 1 (02) U15	0.73	1.39
16-11-13	NSC Vortex Green B02	1	Crossfire Select Luna B02	3	2016 NPSL Division 1 (02) U15	1.72	0.89
16-11-06	NSC Vortex Green B02	3	Seattle United W Blue B02	0	2016 NPSL Division 1 (02) U15	2.69	0.82
16-10-30	Seattle United S Blue B02	1	NSC Vortex Green B02	2	2016 NPSL Division 1 (02) U15	0.86	2.76
16-10-23	Southlake Select TUSK United B02	0	NSC Vortex Green B02	2	2016 NPSL Division 1 (02) U15	1.17	1.66
16-10-16	NSC Vortex Green B02	0	Seattle United Shoreline Blue B02	0	2016 NPSL Division 1 (02) U15	1.39	0.73
16-10-09	Crossfire Select Luna B02	1	NSC Vortex Green B02	0	2016 NPSL Division 1 (02) U15	0.89	1.72
16-10-02	Seattle United W Blue B02	0	NSC Vortex Green B02	2	2016 NPSL Division 1 (02) U15	0.82	2.69
16-09-25	NSC Vortex Green B02	4	Seattle United S Blue B02	0	2016 NPSL Division 1 (02) U15	2.76	0.86
16-09-18	NSC Vortex Green B02	2	Southlake Select TUSK United B02	2	2016 NPSL Division 1 (02) U15	1.66	1.17
16-09-11	Seattle United Shoreline Blue B02	2	NSC Vortex Green B02	7	2016 NPSL Division 1 (02) U15	0.73	1.39
16-09-05	NSC Vortex Green B02	3	Wenatchee Valley United Sounders B02	0	2016 Labor Day Cup BU15 Silver	3.68	1.07
16-09-04	NSC Vortex Green B02	1	Crossfire Select Luna B02	1	2016 Labor Day Cup BU15 Silver	1.72	0.89
16-09-04	Seattle United NE Blue B02	2	NSC Vortex Green B02	3	2016 Labor Day Cup BU15 Silver	0.55	4.92
16-09-03	Wenatchee Valley United Sounders B02	0	NSC Vortex Green B02	3	2016 Labor Day Cup BU15 Silver	1.07	3.68
16-09-03	NSC Vortex Green B02	7	RSA Elite B B02	2	2016 Labor Day Cup BU15 Silver	7.60	0.80
16-08-21	NSC Vortex Green B02	2	Seattle Celtic Green B02	3	2016 Bigfoot Gold U15	2.20	1.84
16-08-20	NSC Vortex Green B02	1	NPSA Titans Navy B02	2	2016 Bigfoot Gold U15	1.69	1.63
16-08-19	NSC Vortex Green B02	0	Crossfire Premier B B02	0	2016 Bigfoot Gold U15	1.02	1.26
16-07-31	Eastside Timbers Black B02	2	NSC Vortex Green B02	1	2016 Mt Hood Challenge U15 Gold	0.99	1.91

date	home		away		venue	pred.home	pred.away
2016-07-31	GPS Oregon B02	3	NSC Vortex Green B02	3	2016 Mt Hood Challenge U15 Gold	1.36	2.32
2016-07-30	Crossfire Oregon Green I B02	0	NSC Vortex Green B02	1	2016 Mt Hood Challenge U15 Gold	1.20	1.41
2016-07-30	NSC Vortex Green B02	4	GPS Newberg B02	1	2016 Mt Hood Challenge U15 Gold	3.93	1.08
2016-07-29	Salem Chelsea B02	3	NSC Vortex Green B02	0	2016 Mt Hood Challenge U15 Gold	2.89	1.47